

TRAILBLAZER

A black and white photograph of a 1958 Chevrolet Trailblazer car parked in front of a building with large windows and trees. The car is a dark color, possibly black or dark grey, and is shown from a front-three-quarter view. The building behind it has several large, multi-paned windows. There are trees in the background, some of which are partially obscured by the building. The overall scene is a classic automotive advertisement setting.

1958

TRAILBLAZER

1958



CENTRALIA JUNIOR COLLEGE
Centralia, Washington



Dedicated to the Communities



Highway - 6-5

Which We Serve

SHELTON

THURSTON

GRAYS HARBOR

OAKVILLE

ROCHESTER

PACIFIC

LEWIS

CEN

CHEH

ADNA

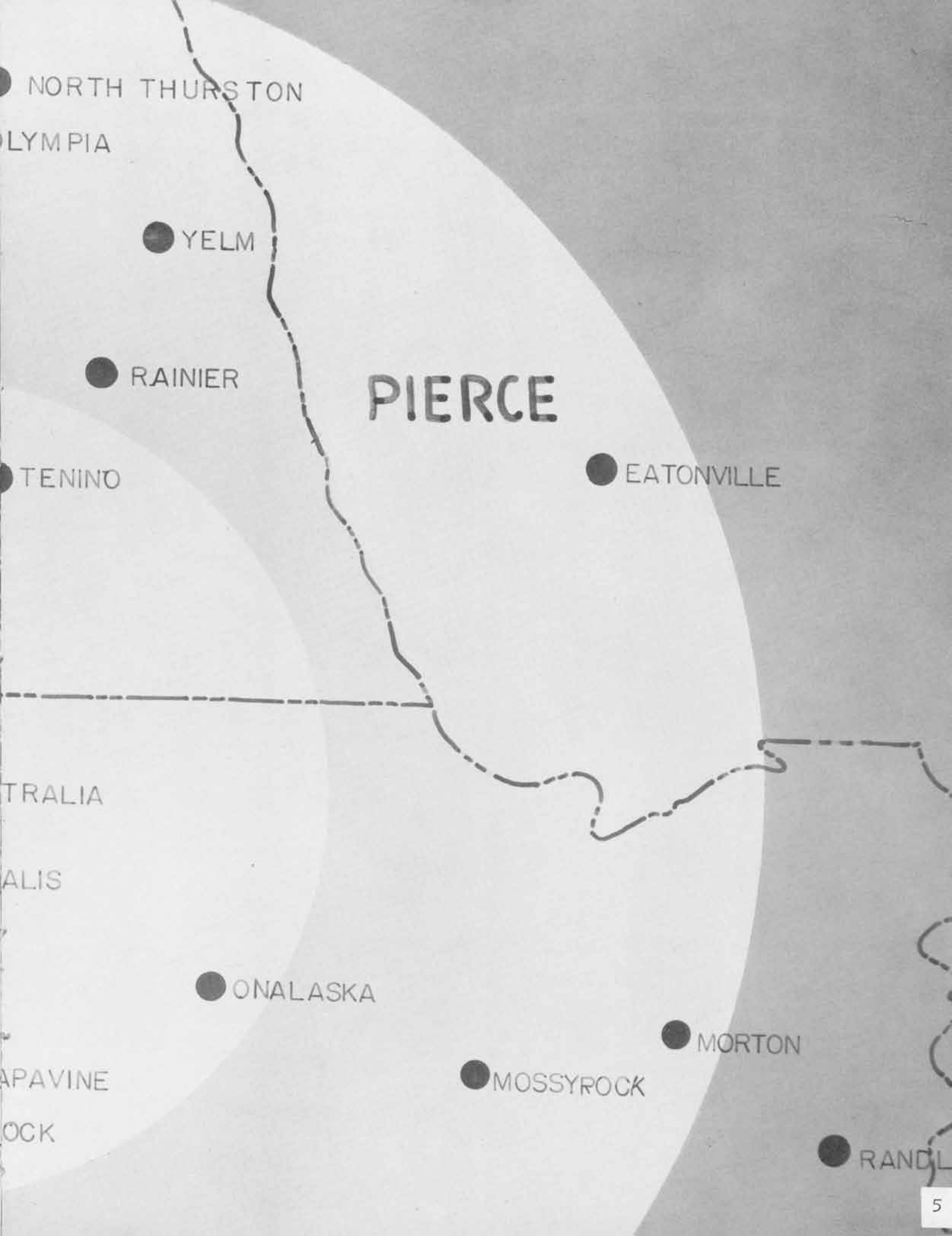
LEBAM RAYMOND

PE ELL

BOISTFORT

NA

WINL



NORTH THURSTON

OLYMPIA

● YELM

● RAINIER

PIERCE

● TENINO

● EATONVILLE

TRALIA

ALIS

● ONALASKA

● MORTON

APAVINE

● MOSSYROCK

OCK

● RANDL



Table of

**Administration
Page 8**

**Activities
Page 21**



Classes



Contents

**Organizations
Page 49**

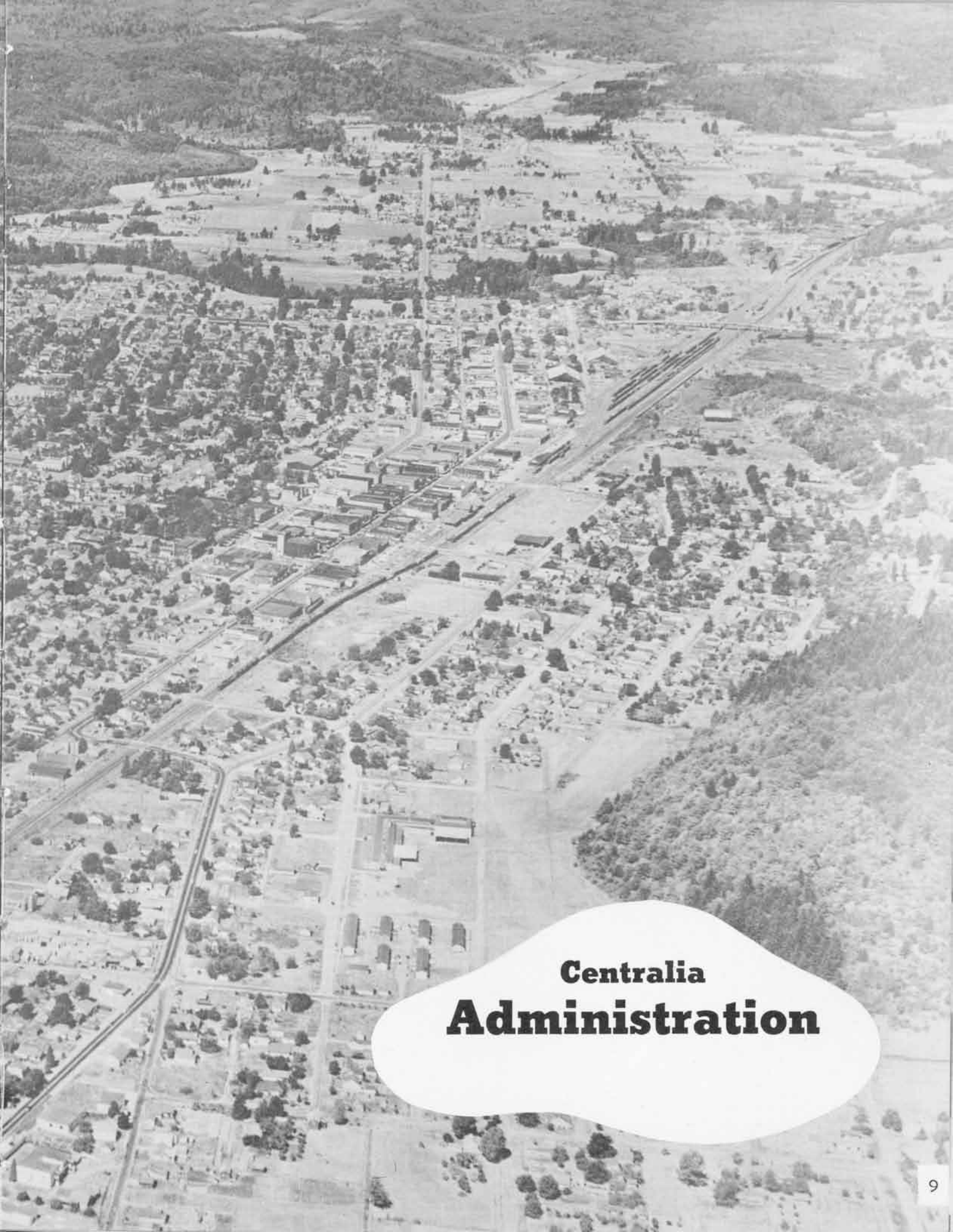


**Athletics
Page 57**



Page 78





**Centralia
Administration**



KENNETH PAUL MALLERY

B.A., M.A., D.Ed., Marietta College,
Ohio State College, University of
Washington
Superintendent of Schools

BOARD OF DIRECTORS

Standing: Cleon R. Linderman, Member; Dr. K. P. Mallery, Superintendent of Schools; Morrill F. Folsom, Vice-President; Miss Eva J. Cobb, Secretary. Sitting: Dr. George F. Parke, Member; Maurice Rubentein, Member; Felix J. DeLisle, President.



Frederick C. Kintzer

B.A., M.A., Ed. D. University of Washington, Stanford University
Dean



A DECADE IN RETROSPECT

It has been a privilege to have been associated with Centralia Junior College for nearly ten years. During this time, the dreams of many who have gone before become reality. Benefits now enjoyed by faculty and students may be attributed to ideas formulated years ago. In the same fashion, foundations for the future, being laid through the cooperative efforts of administration, staff and students may not be felt for years to come.

During the past decade, it has been stimulating to see Centralia Junior College emerge from its original location in the high school building into a campus of its own.

The staff, originally serving both the college and high school, can now concentrate almost entirely on college instruction. The student body has more than doubled in pre-professional areas, and vocational-terminal and community-service type courses are in great demand.

As a climax to many years of cooperative effort, the college was placed on a permanent full accreditation basis in November, 1954, by the Northwest Association of Secondary and Higher Schools. It is difficult to leave Centralia Junior College and a community of friends. Although I will no longer be associated with this institution, I will rejoice in its progress to come.

Benedict T. Hallgrimson

B.A., M.A. Graduate work on Ph. D. University of Washington
Dean



I have been impressed by the warm friendly atmosphere manifested by faculty and students at Centralia Junior College. May I express my appreciation to you for accepting me in this manner. With your support I look to the future with optimism.

As your new dean, I appeal to faculty and students alike to seek out the opportunities that are here in abundance. Enriched living may best be accomplished when faculty and students make every effort to add a distinctive contribution in and out of the classroom to every day of living. Creativity is the product of a working mind. College life is only what we make of it. Realization of significant life values is a direct outcome of an intelligent seeking out of the truth and a devotion to that end.

To you students of Centralia Junior College, may I offer this suggestion: live each day fully; make each and every day the best day of your life. Don't rely upon tomorrow for achievement—live for today. I am not suggesting that you are to forsake an intelligent plan for projecting your aims and ambitions into the future. By all means plan for the future—look ahead—but in doing so, don't lose sight of your responsibilities for today. Try to enrich each day's living experiences with a deeper sense

of scholarship; seek a deeper understanding of the social, political, moral, ethical, and spiritual issues of the day. Draw these issues into the classroom. Consider them first in terms of the campus, then in local, national, and international scope. It is this awareness that supplies an important part of the motive for further exploration. For the person who has been successful in learning has a developing sensitivity to problem issues in any area and will never be satisfied to stop learning and live in a static world.

Remember that what you are today, what you think today, and what you do today, largely determines what you will be tomorrow.

In closing, may I include these words of the well-known American poet, Henry Wadsworth Longfellow: "Lives of great men will remind us that we can make our lives sublime; and in departing, leave behind us; footprints on the sands of time."

As your new dean, I invite both faculty and students to visit with me at any time. The door to my office is open to everyone alike. I hope that before this year is over, I shall be able to count many of you as personal friends.

Business Administration

CHAIRMAN, DEAN S. THORNTON



DEAN S. THORNTON, B.A., M.A.
University of Washington, Washington
State College
Instructor of Business Administration
and Typing



ARLEY KOLSTAD, B.A.
University of Washington
Instructor of Secretarial Sciences



LLOYD B. DYSART, B.A., LL.B.
University of Washington
Instructor of Business Law

Engineering-Mathematics

CHAIRMAN, VINCENT COATES



VINCENT COATES, B.S., B.E.
United States Military Academy, College of
Puget Sound, University of Washington
Instructor of Mathematics and
Engineering



ROBERT C. GODSEY, B.S., M.A.
Indiana University, University of Wyoming
Instructor of Mathematics

Humanities

CHAIRMAN, ETHA RUSSELL



ETHA RUSSELL, B.A., M.A.
University of Washington, State College of
Washington
Instructor of English



RICHARD LINDNER, B.A., M.A.
University of Washington
Instructor of English



RUTH STAUFFER, B.A.
University of Oregon
Instructor of English



FRANK M. ROSA, B.A.
University of Montana, University of Colorado
Instructor of English



DONALD E. CARSTEN, B.A., B.Ed.,
M.A.
College of Puget Sound, Washington State
College
Director of Student Affairs, Instructor
of Health Education and Speech



KENNETH KIMBALL, B.A., M.A.
University of Washington, Boston University
Paris Conservatory
Instructor of Music



ROBERT BAUER, B.A.
Eastern Washington College of Education,
University of Washington
Instructor of Art



NORMAN D. ALEXANDER, B.A.,
M.A.
University of Nebraska, University of Denver
Librarian

Social Sciences

CHAIRMAN, MINNIE LINGREEN



MINNIE LINGREEN, B. A., M.A.
University of Iowa, University of Washington
Instructor of Social Sciences



ROBERT HARRIS, B.A., M.A.
Nebraska Central, Creighton University
Instructor of Social Sciences



OWEN C. WICKS, B.A., M.A.
Dakota Wesleyan University, University of
Washington
Instructor of Economics and Speech



KATHARINE KEMP, B.A., M.A.
Washington State College
Counselor for Women, Instructor of
Foreign Languages and Psychology

Life Sciences

CHAIRMAN, WILLIAM BATIE



WILLIAM BATIE, B.S., M.S.
Hastings College, University of Nebraska
Counselor for Men, Instructor of
Biological Sciences



JUNE SIPPOLA, B.S., R.N.
Washington State College
Instructor of Practical Nursing



RUFUS W. KISER, B.S., M.S.
University of Washington
Instructor of Biological Sciences and
Forestry



ROBERT WALLENSTEIN, B.S., B.Ed.,
M.Ed.
Washington State College, Oregon State College
Instructor of Agriculture

Physical Sciences

CHAIRMAN, ARTHUR EHRET



ARTHUR EHRET, B.A.
Northwestern College
Registrar, Instructor of Chemistry



BOYD C. MILLS, B.S., M.S.
Washington State College, College of Puget
Sound
Director of Applied Arts, Instructor of
Physics and Mathematics



JOHN V. GRIEL, B.S., M.S.
University of Washington
Instructor of Chemistry



MAURICE G. DAVIES, B.S., M.S.
University of Washington
Instructor of Physics Laboratory

Physical Education

CHAIRMAN, CAMERON J. OSTRAND



CAMERON J. OSTRAND, B.A., M.S.
Nebraska State Teachers' College, Colorado
University
Instructor of Physical Education
and Biology



MARILYN ROGERS, B.S.
University of Washington, University of
Colorado
Instructor of Physical Education



JACK WHITTAKER, B.A.
Central Washington College of Education
Instructor of Physical Education
and Health Education

Office Staff



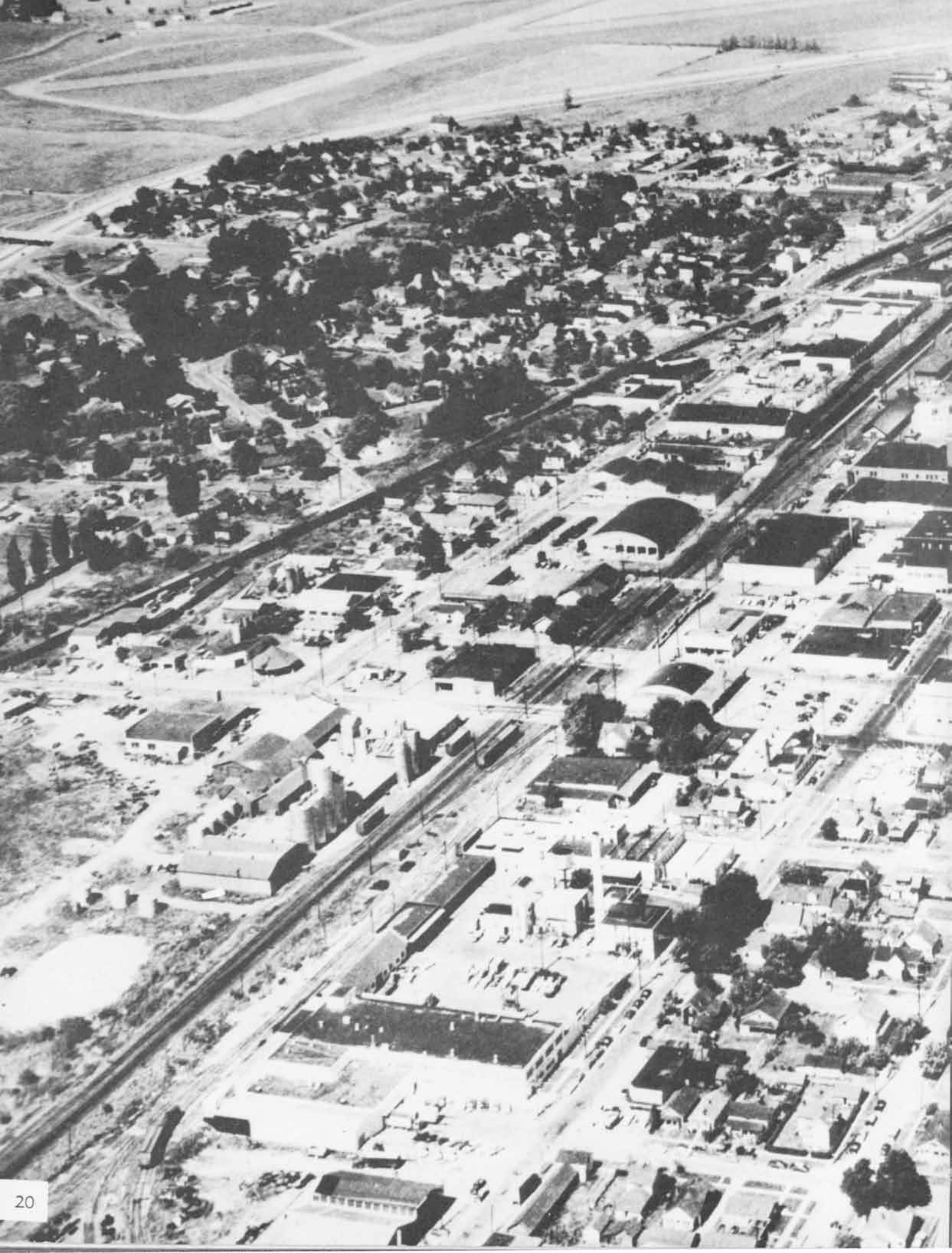
CONSTANCE DEICHMAN, B.A.
University of Oregon
Secretary



CHARLENE SAGE LOFTESNESS, B.Ed.
University of New Mexico, Indiana University
Secretary



LILLIAN CHRISTENSEN, B.A.
University of Washington
Instructor of Physical Education





Chehalis
ACTIVITIES



Student Council



TAMERIA NEWMAN
Publicity Manager

SUSAN NOEL
Jayseer Editor

DONALD CARSTEN
Director of Student Affairs



VERN OLSON
Veterans' Club President

GEORGE UPTON
Circle K Club President

JANE AUSTIN
Coed Club President

SYLVIA DRAKE
Trailblazer Editor



MARLENE CARLSON
Jayseer Editor

EVERETT MACOMBER
Sophomore President

ALAN WALTAR
Freshman President

GARY HERRIFORD
Student NEA President



STEVE MEREDITH
Intercollegiate Commissioner

BILLIE BOJACK
Sophomore Representative

GENE FAGERNES
Forestry Club President

MARY LOU DUNCAN
Freshman Representative

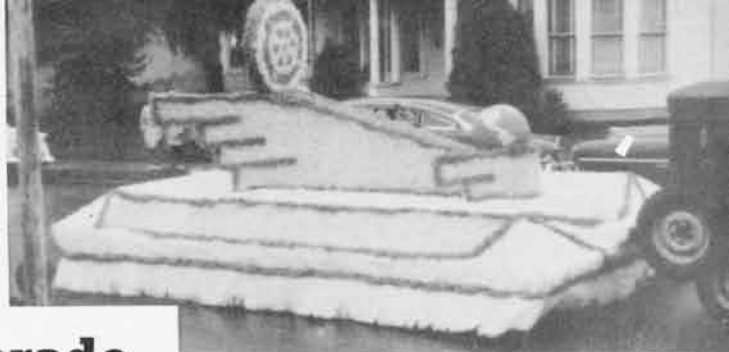


Ann Fenn, Secretary-Treasurer

A.S.B. Officers

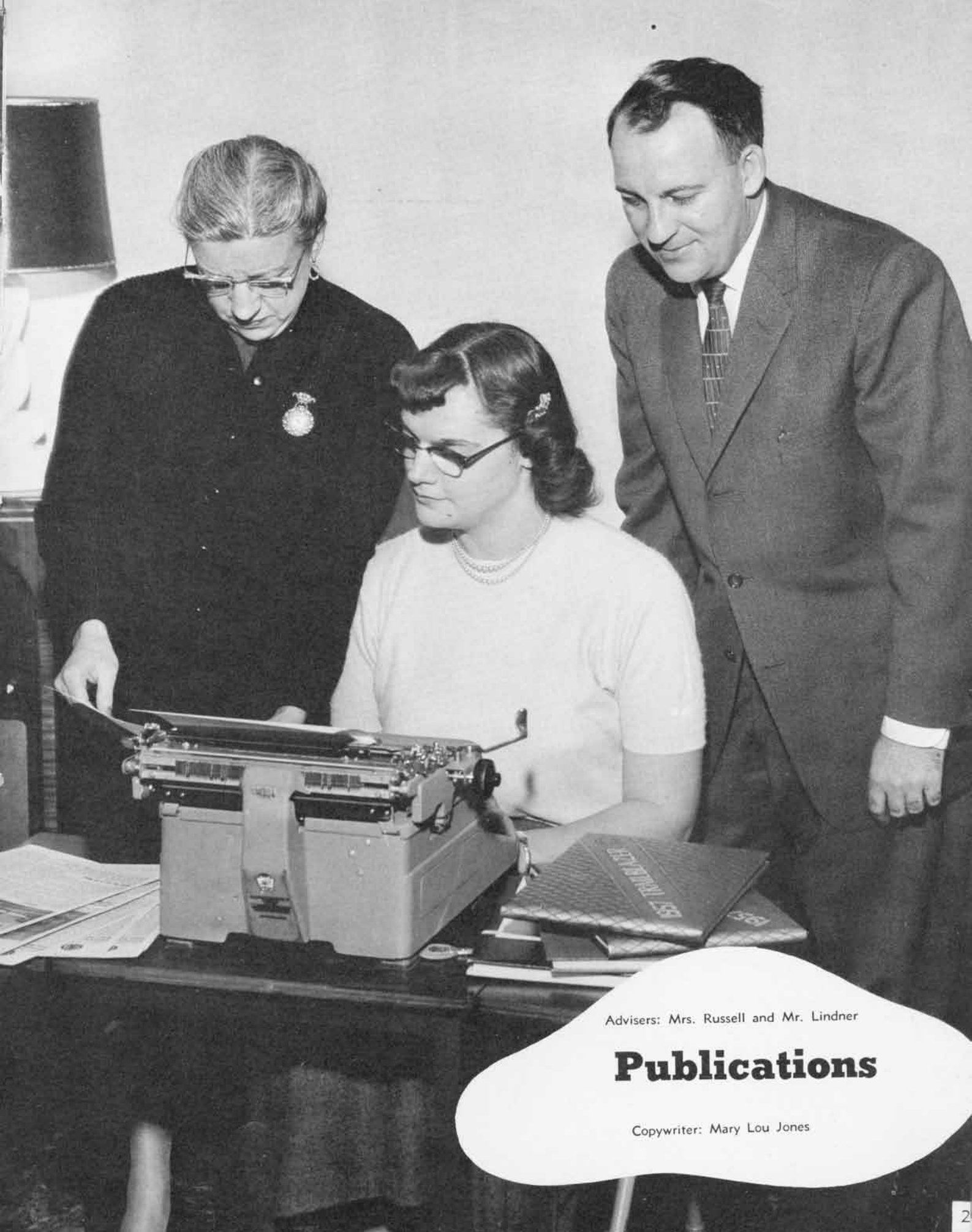
Mary Garrison, Vice-President

George Rasmussen, President



Homecoming Parade Snaps





Advisers: Mrs. Russell and Mr. Lindner

Publications

Copywriter: Mary Lou Jones



SYLVIA DRAKE
Editor



BEVERLY MONROE
Assistant Editor



SHARON HOBART
Assistant Editor

Yearbook Staff

We of the Yearbook staff can now give a sigh of blessed relief—another yearbook has been completed. My sincere appreciation goes to my staff for their loyal support and wonderful help. Also, my whole hearted thanks go to Mr. Lindner for his help and endless patience. We appreciate the help of Evernden Studios and The Centralia Daily Chronicle.



MR. KOLSTAD
Photography Adviser





MARY ELLEN DOYLE
Sophomore Editor



JEAN MARTIN
Freshman Editor



ELEANOR HATCHER
Copy Editor



GLEN BELLERUD
Sports Editor



JOHN BANGSBURG
Photographer



DAN BRUNER
Photographer



Back row: Mary Lou Jones, Billie Bojack, Darlene Hauge, Glen Bellerud, George Rasmussen, Gary Ewers, Millard Kirkman, Mary Garrison, Tamera Newman, Sharon Hobart. Front row: Sylvia Drake, Joann Kaiser, Peggy Bellerud, Joanne McNulty, Lucille Wolf, Gail Lowe, Sue Hedgren, Mary Ellen Doyle, Eleanore Hatcher, Beverly Monroe.



Jay Seer



David Hines, Millard Kirkman, Marlene Carlson, Sharon Hobart, Susan Noel, Lois Mitchell, Mary Lou Jones, Tamera Newman, Joanne McNulty.

ago to serve a post he held appointed Dean.

The Bremerton appointment represents a district advancement, as the college there has an enrollment of approximately one thousand students and a proportionately larger staff.

Change is always a little sad, and we bid Dr. Kintzer farewell with real regret. We are sure you would not have us feel otherwise. However, our feelings toward him in no way diminish our sincere welcome to you, and we already are more than a little prejudiced in favor of musicians.

We expect you to like us as much as we expect to like you. To a few of us you are not a complete stranger. We remember you at our high school music meets serving competently as conductor of the bands. Some of

SUSAN NOEL
Editor, September through January

pressed. we like the way you walk down the corridors. Your purposeful stride suggests that you will face and solve problems with the same initiative.

We like your dignity. We know that we will always be able to refer with pride to OUR DEAN.

work more and accomplish great things, and we pledge our help in carrying out any program that seems to you worth doing. You may be sure that we will respect your judgement.

You may expect that we and future students of the college will share in the dream of a bigger and better college, serving more and more students and completely fulfilling its purpose as a community college.

You may expect that we will remember you with gratitude when we are gone, for we are certain that you will contribute much to the future of our college.

Thank you for coming to our college. Welcome to you and to all the members of your family. We hope that you will be happy here, and that you will find your work at Centralia Junior College a satisfying experience.

The new JC head holds an A.B. in Music and a Master's Degree in Music Education from the University of Washington, and has spent the past two years working on a doctorate with a major in Educational Administration and Higher Education.



JAY SEER STAFF

Editor-in-Chief ----- Susan Noel
 Feature Editor ----- Millard Kirkman
 Sports Editor ----- George Rasmussen
 Adviser ----- Etha Russell
 Reporters ----- Tamera Newman, Lois Mitchell,
 George Upton, Marlene Carlson
 Typists ----- Mary Lou Jones, George Rasmussen

Editorial

Cars Aren't Cows

Do you park that struggle buggy on our green carpeted campus? Do you park on any green which might be termed grass? If you do, remember green means go. Doesn't it? So the minute you find your wheels sliding on the slippery green, be sure to slide right on off. Proceed to the nearest concrete parking surface or designated parking area.

Just because that car has 300 horsepower does not mean that it requires grass for sustenance. If the car should start to buck a little (as this writer's does), examine it carefully before changing its diet from thirty weight eastern oil to very light western green grass or legumes. Use your horse sense.

If your car moos, take it to a veterinarian rather than park it upon the grass. If you ride a cow, I suppose parking on the grass is permissible. But cars aren't cows!

CJC Missile Successful

Centralia Junior College, under the able leadership of two capable scientists, launched an unguided missile to start the new year with a bang.

It seems as though two students were fed up with U.S. failures and wanted to prove that even laymen could launch rockets. That they proceeded to do.

The first step involved was to acquire materials. That they did to the loss of the chemistry department. A little magnesium coil, some sulfur, and other essentials (chemists can fill you in).

These elements were combined in a neat package, shaped like



Children's Christmas Party a Success

A Christmas party for the



MARY LOU JONES

Hardtimes In Full Swing

Hardtimes, sponsored by the sophomore class of Centralia Junior College, officially started January 20 and will continue until January 31. During this



GEORGE RASMUSSEN

will be held January 9 and 10 o'clock in the evening. The judge and jury will be made up of freshman and sophomore girls.

Also, on January 31, a tug-of-war will take place between the two classes, sophomore boys against freshmen boys and sophomore girls against the freshman girls.

MILLARD KIRKMAN January 1 will be held in Blazer Hall after the Junior College basketball game. Everyone is urged to attend the game and dance. Students should wear their old clothes to the game and the dance. The winners of the beard growing contest will be announced at the dance.

Sweetheart Ball

The Sweetheart Ball will be held Friday, February 7, at the Washington Grade School Gym. Dancing will last from 9 p.m. to 1 a.m., with the Associated Student Body sponsoring the dance.

Bill Hahn will direct the nine piece "Stardusters" dance band. The band includes three saxophones, two trumpets, an electric piano, and a

A Valentine Court consisting of five couples will be chosen. From these five couples, a king and queen will be chosen.

The tickets are two dollars a couple. The girls are requested to wear formals.

Tyro Tournament At CPS

The annual Tyro Turnament will be held at the College of Puget Sound in mid-February. The tournament is designed for those students who wish to gain

ved keen competition in larger schools. It was started in taking part in the see Mr. Wicks immediately.

TRIBE TRIUMPHS

The Yakima Indians defeated the Centralia JC Trailblazers 92-66 on January 11 on the home court. Yakima had considerable height and speed, which proved too much for the Blazers. Ken Rudd was the high point man for Centralia with 19 points.

KNIGHTS SHADOWED

The CJC Trailblazers defeated Wenatchee Valley College 79-75 here in a state conference game. The Blazers led throughout and were paced by Don Fowler, who hit for 25 points.

GRAYS HARBOR

TAMERIA NEWMAN



Centralia Junior College Chorus





Back row: Jerry Okuma, Delmer Ward, Steve Meredith, Don Dorn, Cliff Wahl, James Madsen, Eugene England, Richard Rydman, Marvin Carlson, Dean Harris, Norm Eveleth. Middle row: Joan Balsely, Dorothy Piesch, Marlene Schindler, Dianne Stallcup, Mary Garrison, Gail Lowe, Eleanor Hatcher, Shirley

Ayers, Alice Barber, Tameria Newman, Joann Kaiser. Front row: Celia Damron, Susan Noel, Mary Ellen Doyle, Mary Lou Duncan, Connie Chappell, Beverly Bishop, Garnet Wood, Jane Austin, Myrna Johnson, Lucille Wolfe, Beverly Monroe. Accompanist: Sylvia McAllister. Director: Mr. Kimball.



THE JADES .

Richard Rydman, Don Dorn, Gary Herriford
Steve Meredith



GIRLS' SEXTETTE

Shirley Ayers, Eleanor Hatcher, Mary Ellen Doyle, Mary Lou
Duncan, Susan Noel, Celia Damron, Sylvia McCalister,
Accompanist.

Music



PEP BAND

Front row: Dorothy Piesch, Joanne Balsely, Charles Ede, Duane
Thomsen, Philip Carr. Second row: Eugene Fear, James
White, Howard Batie, Lloyd Flem,
Kenneth Kimbal, director.

CLARINET TRIO

Dorothy Piesch, Charles Ede, Joanne Balsely



CELIA DAMRON
Soloist

CONNIE CHAPPELL
Soloist





You Can't Take It With You

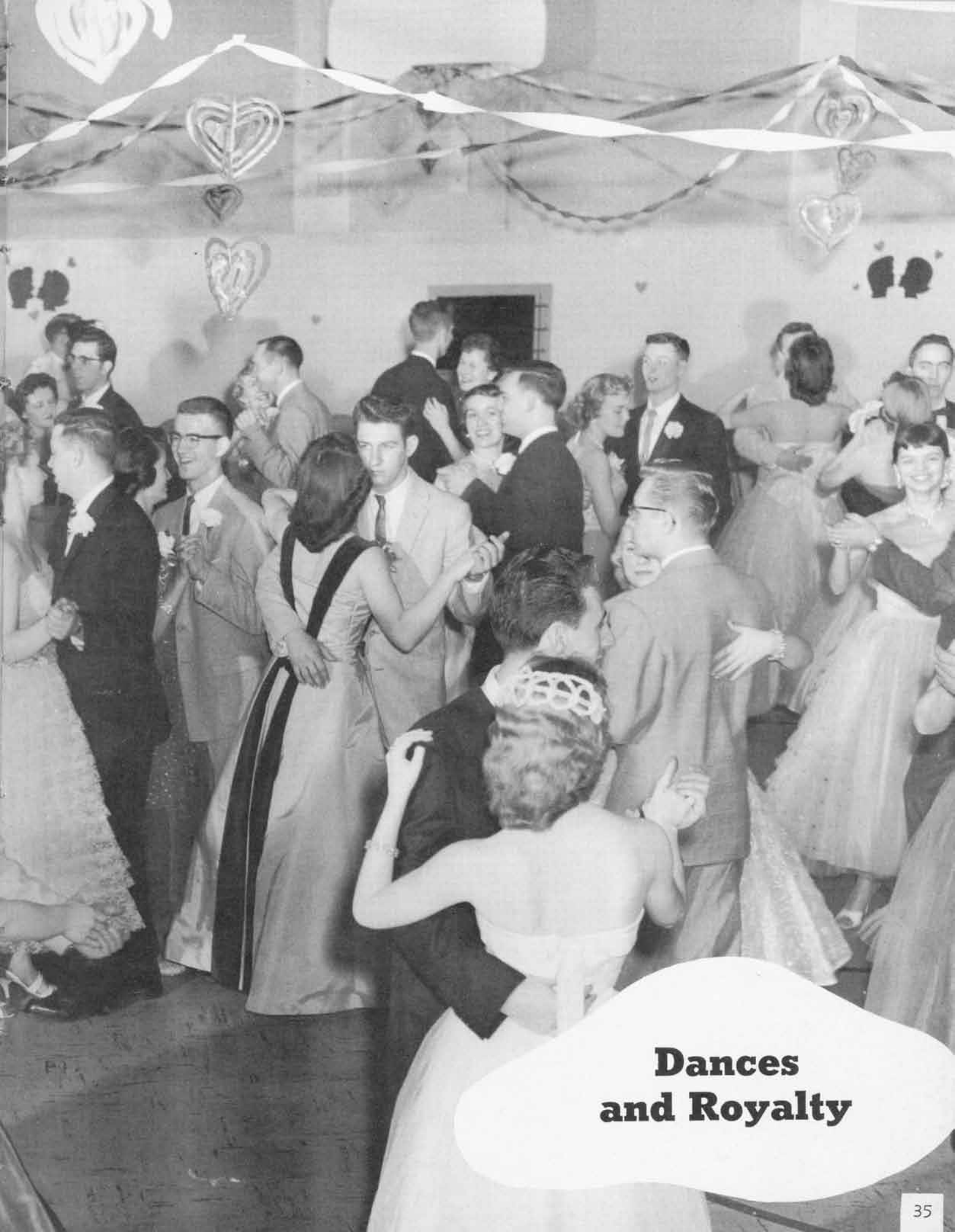
Directed by Frank Rosa
 Assistant Director, Tameria Newman

CAST

Penelope Sycamore	Garnet Wood
Essie	Toni Stover
Rheba	Carole Pearson
Paul Sycamore	Lloyd Flem
Mr. De Pinna	Jesse West
Ed	James White
Donald	Louis Caviezel
Martin Vanderhof	George Rasmussen
Alice	Mary Garrison
Henderson	Donald Saari
Tony Kirby	Dennis Conzatti
Boris Kolenkhov	Richard Thomas
Gay Wellington	Susan Noel
Mr. Kirby	Donald Hasse
Mrs. Kirby	Caroline McCoy
Three Men	Eugene Gibson Ray Walters Mat Skoff
Olga	Tameria Newman







**Dances
and Royalty**



Left to right: Princesses Jean Martin, Ann Bowers, Mary Ellen Doyle, Sylvia McAllister, and Queen Sylvia Drake.



Homecoming Royalty

Dance



HOMECOMING DANCE



HARD TIMES DANCE



HARD TIMES DANCE



SWEETHEART BALL

Snaps



HOMECOMING DANCE



SWEETHEART BALL



HOMECOMING DANCE



SWEETHEART BALL

Sweetheart Ball Royalty





Back row: Don Saari, Bob Pettit, Bob Berry, Gary Petrie,
Front row: Marlene Carlson, Marilyn Loop, King Jim Legat,
Queen Jean Martin, Betty Goebel, Maridel Matheny.

CENTRALIA JUNIOR COLLEGE

Around the Campus

Blazer Hall



Library



Chemistry Lab



Football Practice Field



Main Office



Basketball Grandstand

"Hello Walk"



Classroom



Main Hall



Noble Field



An aerial, black and white photograph of a city, likely Olympia, showing a dense grid of streets and buildings. The city is situated on a peninsula or near a large body of water, with a forested hillside in the foreground. The overall tone is historical and documentary.

Olympia
CLUBS



JANE AUSTIN
President



DOROTHY McEACHRON
Vice-President

Co-Ed Club



MARY ELLEN DOYLE
Secretary



JOANN McNULTY
Treasurer



All women enrolled in Centralia Junior College are members of the Co-Ed Club. The club plans monthly activities to acquaint members with different social situations and to provide fun and entertainment. Miss Katherine Kemp is the adviser.





GENE FAGERNESS
President

Forestry Club



MR. KISER
Adviser

Membership in Centralia Junior College Forestry Club is open to forestry majors and college students interested in forestry and wildlife.

The objectives of the club are to promote interest in professional forestry and in conservation of the natural resources in Lewis County, Washington State and the United States.

Since its organization in 1954, the Forestry Club has been one of the most active organizations of the school. One of its newest projects has been to develop the new experimental forest area located near Scamin Creek.

BOB JUNK
Secretary-Treasurer



Back row: Dave Beck, Howard Johnson, Larry Doubek, Robert Jacobsen, Gene Fagerness, Mr. Kiser. Middle row: Charles Downie, Norman Eveleth, Michael Christian, Ron Mason, Bob Thayer. Front row: Siegfried Vogt, Fred Little, Bob Junk, Ken Hughill.



HOWARD JOHNSON
Vice-President





GARY HERRIFORD
President



SUE HEDGREN
Vice-president



JEAN MARTIN
Secretary-treasurer



JOANN KAISER
Librarian



STEVE MEREDITH
Program Chairman

Student National Education Association

The Margaret Corbet Chapter of the Student National Education Association was organized in 1949. The members in the club are also student members of the Washington Education Association. Meetings were held at noon on the second and fourth Tuesdays of every month in room two. Members decorated the college bulletin boards for National Education Week and for Christmas with appropriate pictures and illustrations. Members also compiled and arranged student body questionnaires. Each year the Margaret Corbet Chapter of the Student National Education Association is also entitled to send delegates to district and state meetings of the State Association of Future Teachers.





THE VETERANS' ANNUAL MASQUERADE DANCE

Veterans' Club

The Veterans' Club of Centralia Junior College is made up of students who have served in the armed forces of the U. S. A. and who are attending college on the G. I. Bill. Faculty advisers for the club are Mr. Whittaker and Mr. Ostrand.

Bill Tappan, vice-president; Vern Olson, president;
Bill Strong, secretary.

Members: George Wise, Wallace Mullenix, Bill Strong, Jim Gibson, Bob Berry, Ken Wilson, Don Beatty, Vern Olson, Jack Orney, Ed Cummins.





United Christian Young People



DAVE BENDER
President

Clara Henderson, Secretary-treasurer; Dave Bender, President;
Vern Wilcox, Adviser; Ray Coburn, Vice-president.

United Christian Young People was organized in 1956 as a club to provide a Christian aspect to campus life and to provide a club for those students who are interested in church activities.

Speakers address the club with talks about Christianity in business, politics, education, and other vocations. Discussions are held on these and other topics. Each year the club sponsors a talent show.

Circle K

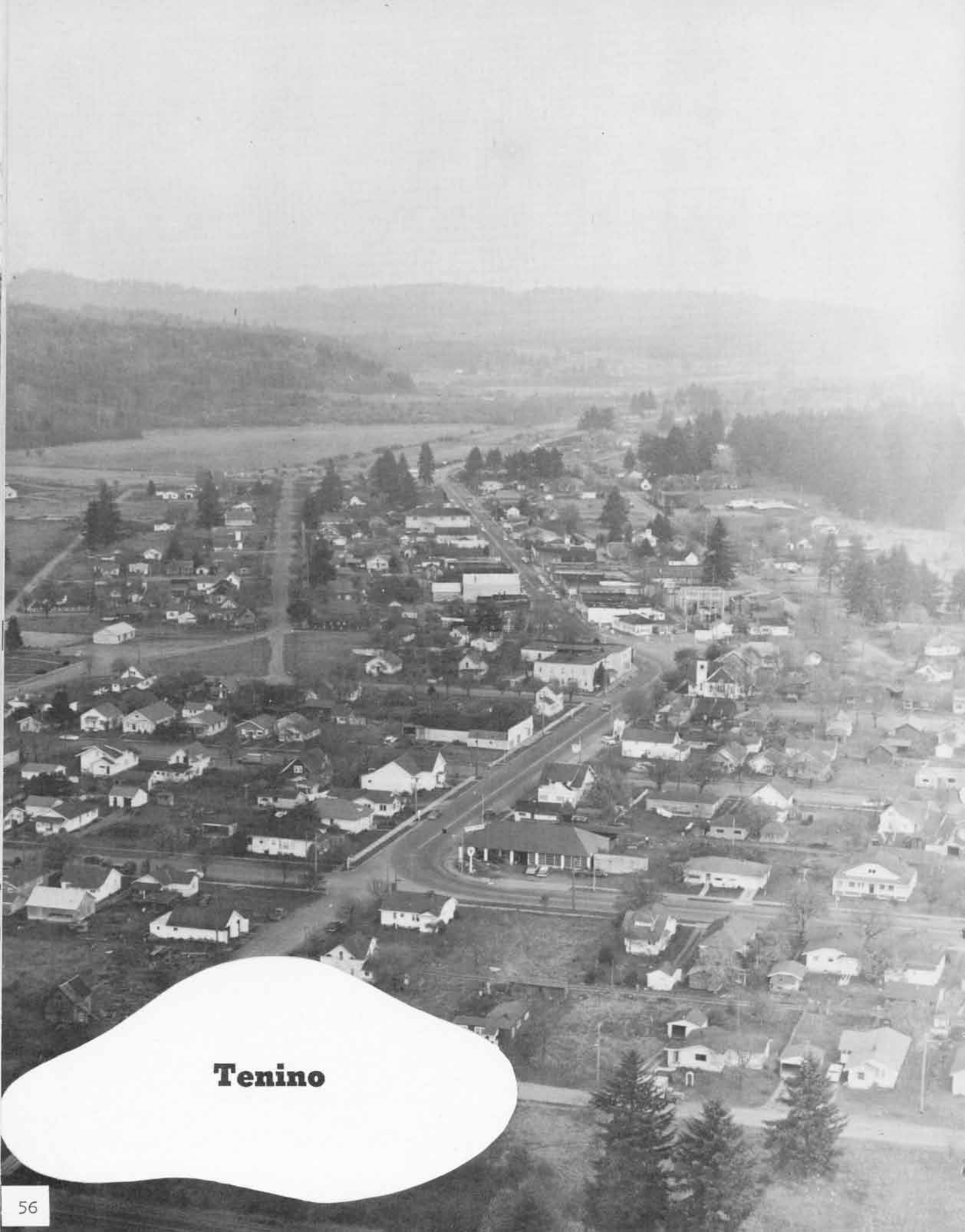
The Circle K is a social organization. Its aim is to serve the school and the community in various ways. The club's first project was to assist the Kiwanis Club in making their Veterans' Day float. The club also sponsored a "Let Down Dance" after first quarter examinations. Circle K, sponsored by the Centralia Kiwanis Club, was officially presented with its International Circle K Charter, February 7, at Charter night in the Elks Club dining room.



President George Upton receives charter from Mel Dennis, Immediate Past Governor of Northwest District of Kiwanis International. Seated at left: Herb Heath and Mary Ellen Doyle.

Back row: Ev Macomber, Bob Thayer, Don Reinseth, Dan Bruner, Rudy Gideon, Lewis Noel, Ken Wilson, Mel Mackey, Dick Allen, Monty Kent. Front row: Boyd Mills (faculty adviser), Paul Lien, Lloyd Flem (secretary-treasurer), George Upton (president), Joe Ferguson (vice-president), Harold Wheeler, Jim Brewer, Harry Hill, Sr. (chairman of Circle K Committee for Kiwanis).

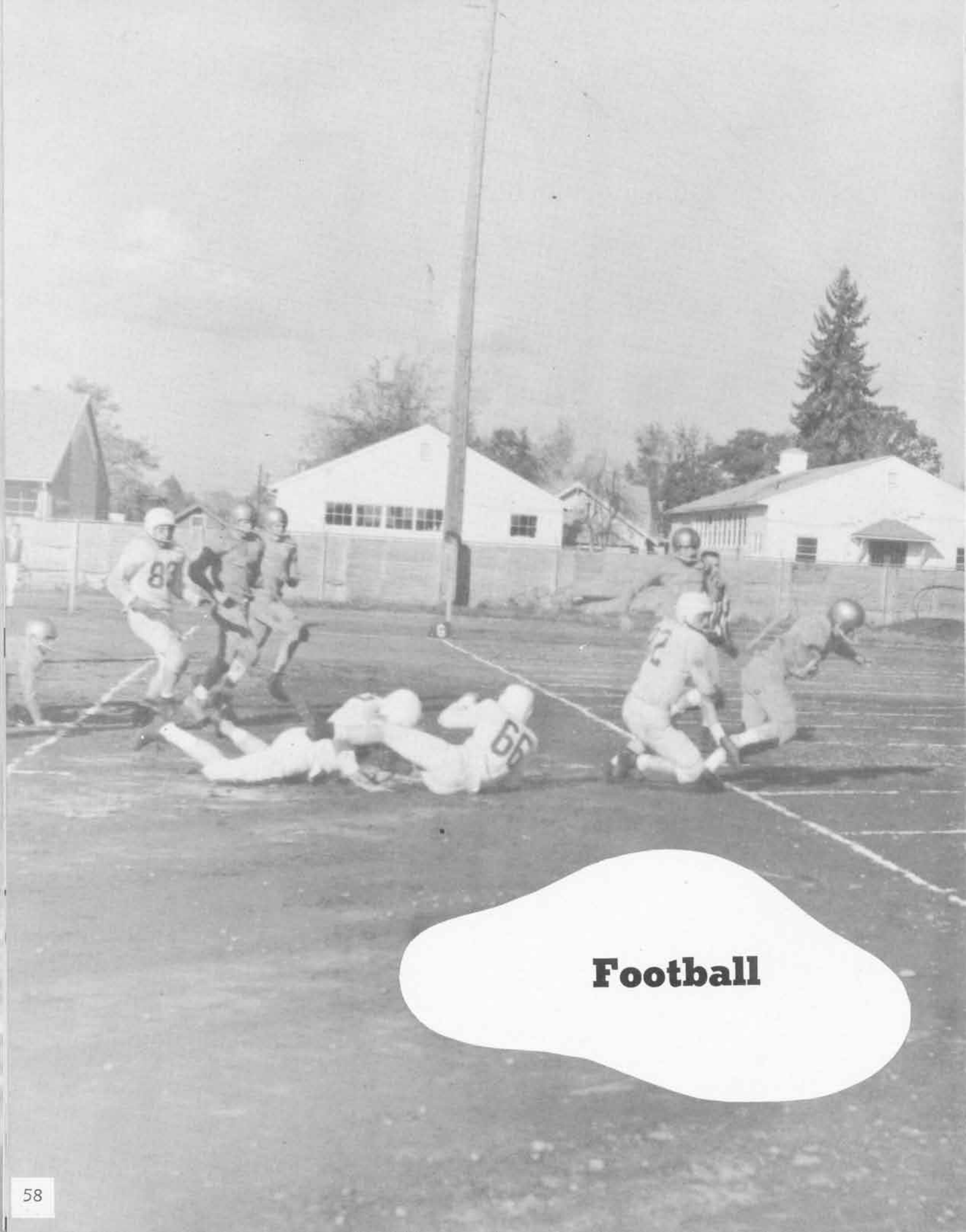




Tenino



Morton
ATHLETICS



Football

MR. OSTRAND
Coach

SEASON RECORD

Opponent		C. J. C.
Wenatchee	40	0
Olympic	33	7
Columbia Basin	0	7
Everett	58	0
Grays Harbor	66	0
Lower Columbia	0	14
Yakima	18	7
Oregon Tech	39	7

ARI ROBERTS
Assistant Coach





Varsity Football Team





Back row: Coach Whittaker, Stewart, Jones, Bishop, Walker, Suter, Reeder, McKechnie, Coach Ostrand. Middle row: Guthrie, Orkney, Testerman, Deskins, Smith, Tauscher, Hanger, Ripka, Roberts. Front row: Drops, Reed, Kaiser, Poppe, Okuma, Matlick, Wiegard, Shepardson.



Yell Staff

Pat Dexter

Joanne McNulty

Sylvia Drake



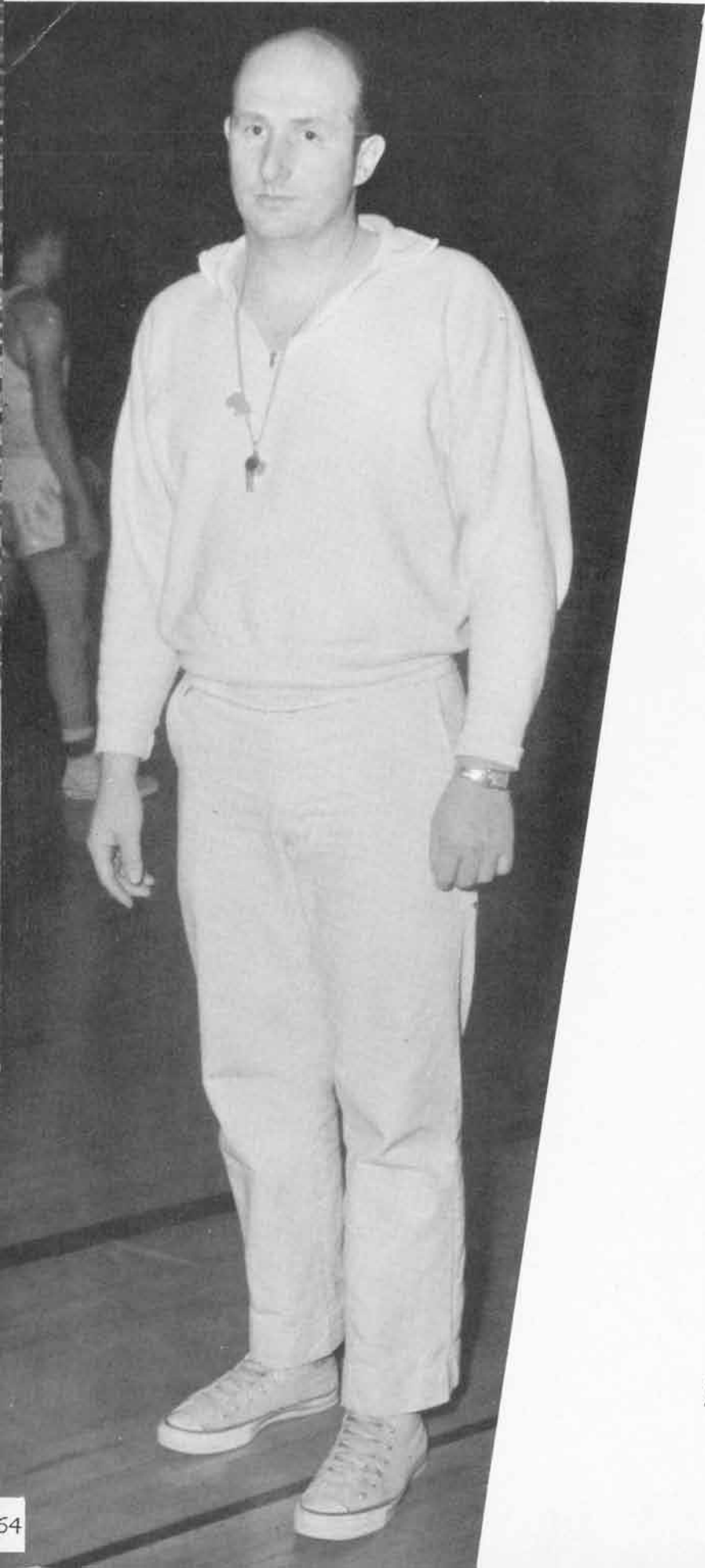
Myrna Johnson

Susan Noel

Bob Adams

Marlane Schindler

MR. WHITTAKER
Basketball Coach



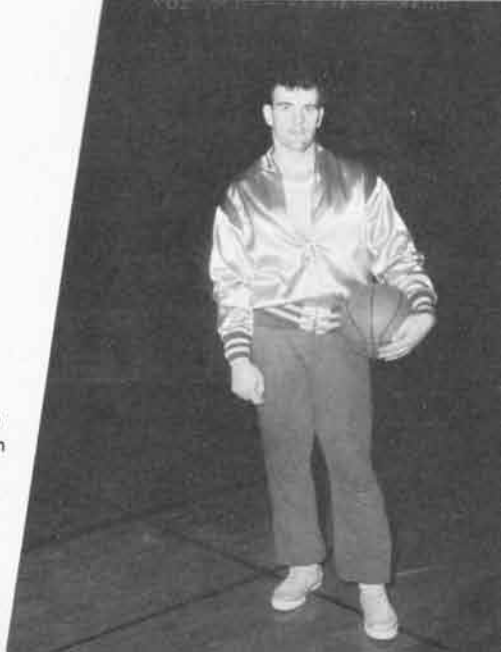
SEASON RECORD

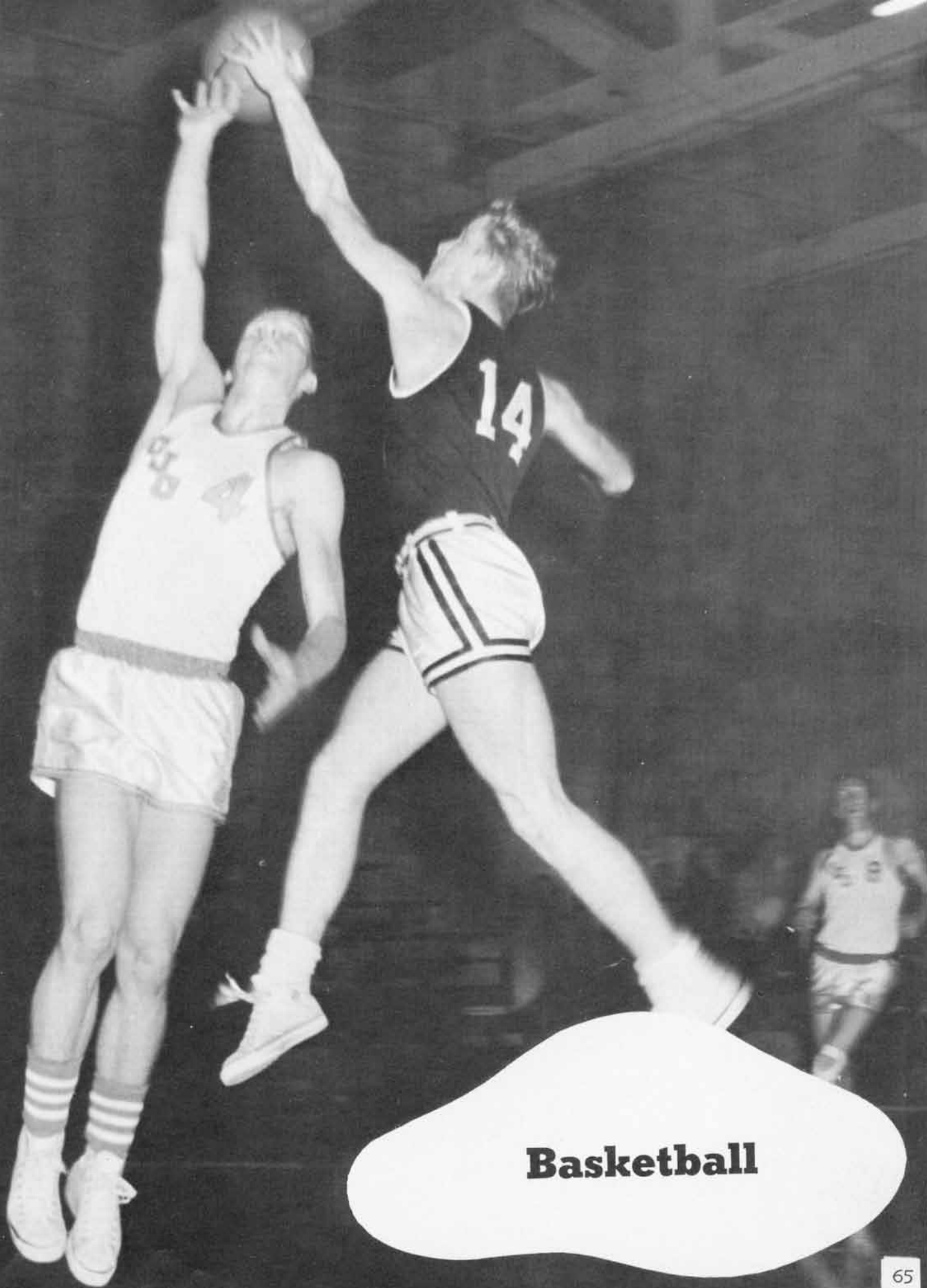
C.J.C. 58	Lower Columbia	51
C.J.C. 68	Clark	84
C.J.C. 80	Skagit Valley	53
C.J.C. 49	Olympic	87
C.J.C. 60	Grays Harbor	70
C.J.C. 79	Wenatchee Valley ..	75
C.J.C. 66	Yakima Valley	92
C.J.C. 79	Everett	95
C.J.C. 53	Wenatchee Valley ..	47
C.J.C. 50	Columbia Basin	83
C.J.C. 71	Skagit Valley	80
C.J.C. 70	Lower Columbia	61
C.J.C. 57	Yakima Valley	76
C.J.C. 51	Columbia Basin	83
C.J.C. 52	Clark	67
C.J.C. 50	Grays Harbor	61
C.J.C. 75	Olympic	114
C.J.C. 79	Everett	75

STEVE JONES
Manager



ARI ROBERTS
Assistant Coach





Basketball



BOB BERRY
Guard



DON FOWLER
Forward



GARY PETRIE
Guard



ROD POPPE
Guard



GENE FRANK
Center



OWEN OLSEN
Forward



CHUCK TOWNER
Guard



DEL MORTON
Forward



ROD STEWART
Forward



STEVE HAYES
Forward



KEN RUD
Center

JUNIOR VARSITY SQUAD

Steve Jones, center; Larry Testerman, forward; Jim Guthrie, forward; Fred Reed, guard.





TOM WALKER

Recipient of the Most Inspirational-Player Award
in Football



Gary Petrie

Recipient of the Most Inspirational-Player
Award in Basketball

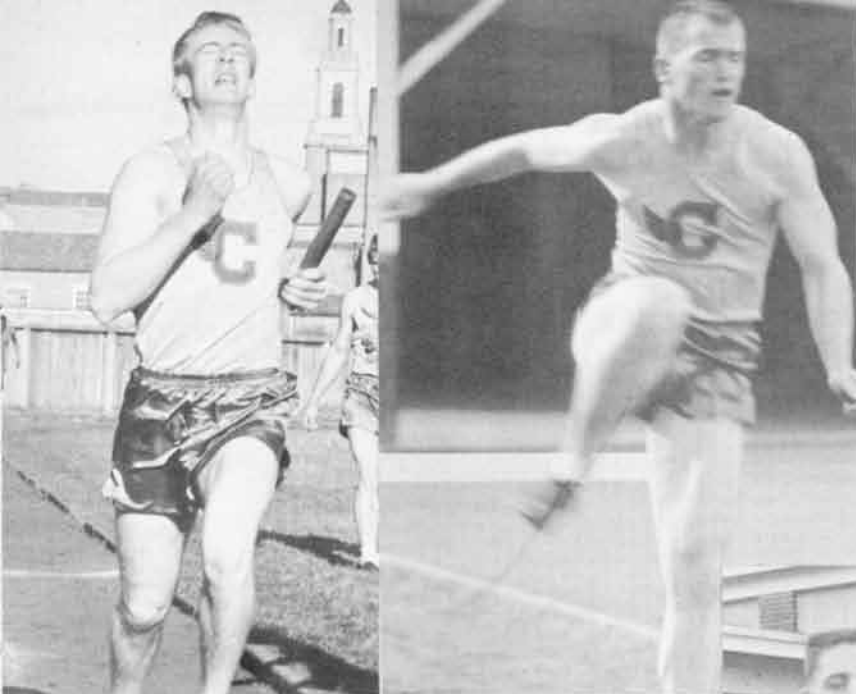


Baseball



VARSITY BASEBALL TEAM

Back row: Coach Ostrand, Folwell, Upton, Oster, Hayes, Tomal, David, Mackey, and Drops. Front row: Orni, Morton, Marks, Hangartner, Christian, Whittle, and Rinear.



Track

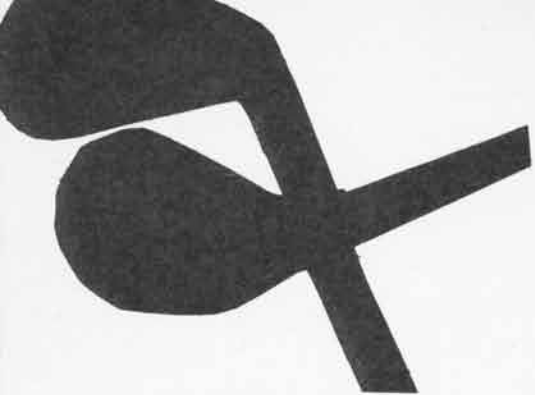
TRACK SCHEDULE

- April 11 — Everett Invitational Meet
- April 19 — Yakima Invitational Meet
- April 26 — Lower Columbia - Southern Teams
- May 3 — Centralia Invitational Meet
- May 16 — Southern District Meet - Vancouver
- May 23 — State Meet - Skagit Valley



VARSITY TRACK TEAM

Front row: James Guthrie, John Brill, Dan Hayes, Mike Collins, Pal Singh Hundal Mohnider. Back row: Richard Kletsch, Norman Linscott, Gene Frank, Howard Johnson, Gene Fagerness, Tom Walker. Not present: Richard Howell, John Tauscher, Charlie Bishop.



Golf

GOLF SCHEDULE

- April 4 — at Everett
- April 5 — at Mount Vernon
- April 11 — at Bremerton
- April 14 — Clark at Centralia
- April 18 — Everett at Centralia
- April 22 — at Aberdeen
- April 25 — Lower Columbia at Centralia
- April 29 — Olympic at Centralia
- May 2 — Grays Harbor at Centralia
- May 9 — at Lower Columbia
- May 12 — at Vancouver
- May 16 — Skagit Valley at Centralia
- May 23 — Junior College Tournament at Bremerton.

GOLF TEAM

Chuck Downie, Steve Lee, Jim Whitmire, Jim Gibson, Bill Strong, Bob Berry, Fred Martin, and Buz Saari. Adviser, Mr. Thornton.



Tennis

TENNIS TEAM

Back row: Don Beatty, Monte Kent, David Morrow, Melvin Mackey, Billie Tappan, Eugene England, Louis Caviezel, Alan Waltar. Front row: Jerry Okuma, Fred Reed, David Bender, and John Young. Adviser, Mr. Coates.

TENNIS SCHEDULE

- March 21 — Lower Columbia at Centralia
- March 28 — at Everett
- April 4 — Olympic at Centralia
- April 11 — at Yakima
- April 18 — Clark at Centralia
- April 25 — at Lower Columbia
- May 2 — Everett at Centralia
- May 9 — at Clark
- May 13 — Yakima at Centralia
- May 16 — at Olympic
- May 23-24 — State Tournament at Yakima.



Blazer Boosters

R. C. Althaus	Centralia	Nick Klaras	Centralia
Chris Althaus	Centralia	Dr. A. G. Kinberg	Centralia
Mrs. Sadia Adkins	Centralia	Robert Knowlse	Centralia
Eugene I. Alford	Centralia	Harry Laird	Centralia
Mrs. Henry Adams	Centralia	C. R. Linderman	Centralia
Barner-Swenson	Centralia	Claude Lee	Centralia
John Benedict	Centralia	George M. Lovelace, M.D.	Centralia
David Bloom	Centralia	Francis Moses	Centralia
Marc Burdick	Centralia	A. J. McCormick	Centralia
W. N. Beal	Centralia	Jack McNiven	Centralia
Paul Bigelow	Centralia	Ted Miller	Chehalis
Robert S. Brister	Centralia	R. P. Melhart	Chehalis
Marshall Berryhill	Centralia	McClaskey Woodwork	Centralia
Al and Ted Benny	Chehalis	John M. Markham	Centralia
Dr. J. C. Breckenridge	Centralia	Ed S. Mayes	Centralia
Larry Brill	Centralia	Natl. Bank of Commerce	Centralia
H. E. Caldwell	Centralia	Clarence Hoerling	Centralia
Burdette Carter	Centralia	Dale Nordquist	Centralia
Warren Christianson	Centralia	Walter Nordquist	Centralia
William Conrad	Centralia	Naismith and Davis	Centralia
Frank Cotter	Centralia	Bill Oliver	Centralia
M. L. Countryman	Centralia	R. H. O'Neill	Bucoda
Coolidge and Sons	Centralia	Ellis Oliver	Centralia
Carl Dickey	Centralia	Garfield Penley	Centralia
Floyd J. David	Centralia	Pittsburgh Paint Co.	Centralia
Doyle Drugs	Chehalis	Pacific Sand and Gravel	Centralia
Ralph Elsey	Centralia	Richard Phillips	Centralia
Leo Eddins	Centralia	Lehman Proffitt	Centralia
John Edinger	Centralia	Elmer Phillips	Centralia
Frank Evernden	Centralia	Joy Palmer	Centralia
E. S. Evans	Centralia	H. F. Petrie	Chehalis Road
Larry Edinger	Centralia	Quality Cleaners	Centralia
V. A. Forstrom	Centralia	Wm. Rickard	Centralia
Vern Fowler	Centralia	George Reda	Centralia
Hugh Gaudreau	Centralia	Dr. E. C. Roberts	Centralia
Ross M. Galvin, M.D.	Centralia	Benjamin M. Rome	Centralia
Dayton B. Garrison, Jr.	Centralia	Wayland Rice, M.D.	Centralia
Donald Greeland	Centralia	George W. Ripley	Centralia
Dr. E. W. Guinn	Centralia	Hiram Roberson	Centralia
Sid Gallagher	Centralia	William Ramsey	Centralia
Frank Garland	Centralia	George Scherer	Centralia
Earl Gullickson	Centralia	George Sears	Chehalis
Art Graham	Centralia	Norton Seip	Centralia
Hatcher's Poultry Farm	Olympia	Ed Taylor, M.D.	Centralia
Harry Hensley	Centralia	Ed Thoreson	Centralia
O. J. Hodge	Centralia	Hal Tingstrom	Centralia
Howard Hutchins	Centralia	E. D. Truett	Centralia
Al Helena	Centralia	Robert J. Tipler	Centralia
Ray Heinricher	Centralia	Otmar Voegle	Centralia
Herb Heath	Centralia	Louis A. Vimont	Chehalis
Richard Hoffman	Centralia	John Wells	Centralia
Ideal Laundry	Centralia	W. F. Wagner	Centralia
Chuck Johnson	Centralia	Ray Wheeler	Centralia
Wesley Jones	Centralia	War-Mur Electric	Centralia
Arnold James	Chehalis	Willie's Sport Shop	Centralia
Harold Kinnaman	Centralia	Jerome Whisler	Centralia
KELA	Centralia	Henry Yeager	Centralia
Kellogg's Pantorium	Centralia	Alva Yeager	Centralia



Women's Athletics

Women's Recreation Association

MARILYN ROGERS
Adviser

The purpose of the Women's Recreation Association is to promote sportsmanship, recreation, and companionship through the medium of women's athletic activities. Any college woman may become a member of the group by participating in a competitive sport or activity. WRA teams participate in field hockey and basketball tournaments at various colleges. WRA also sponsors dances after CJC basketball games.

Below: WRA officers: Marlene Carlson, Vice President; Billie Bojack, President; Lois Mitchell, Secretary-Treasurer.





Women's Field Hockey Team



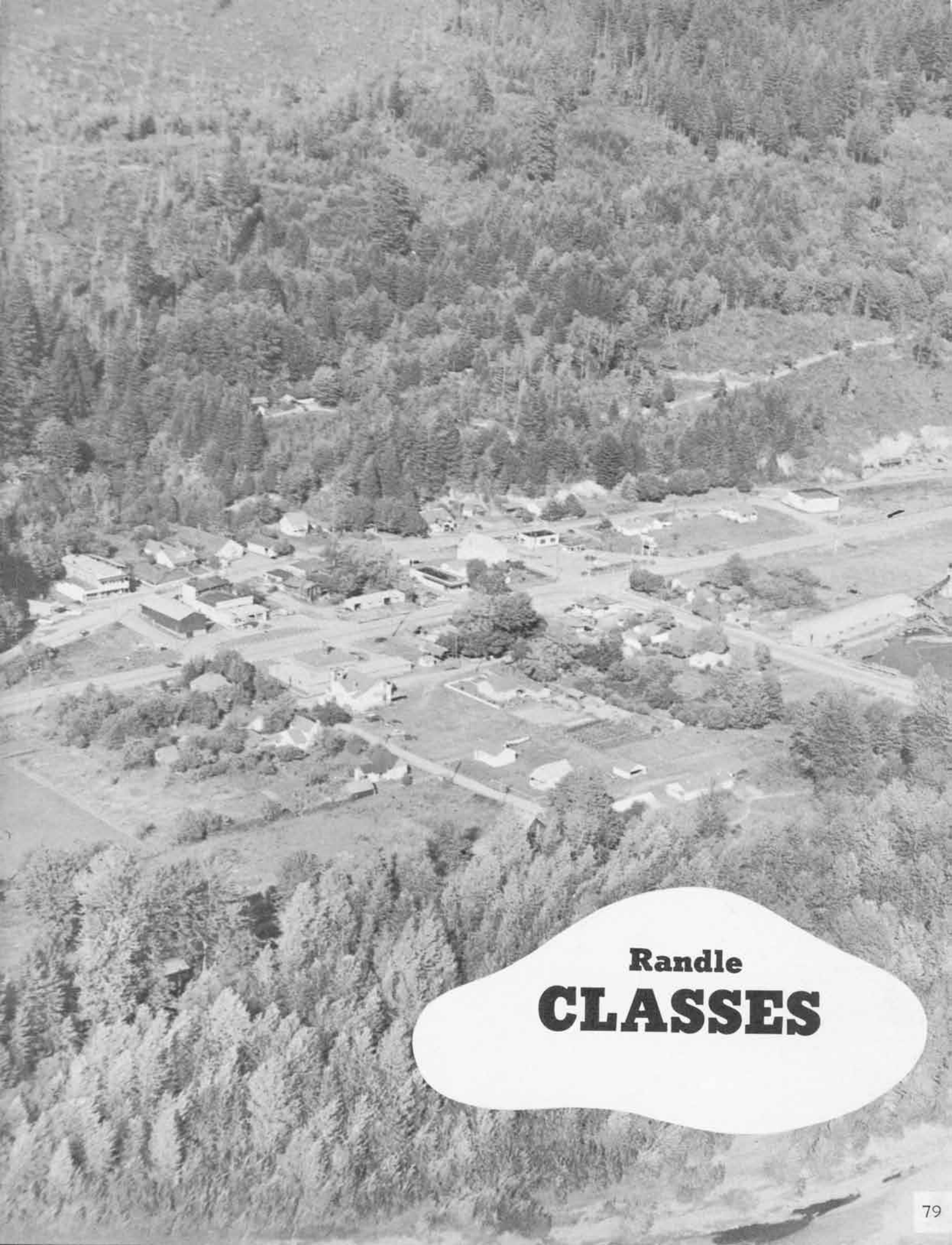


Back row: Lois Mitchell, Lucille Wolfe, Gail Lowe, Billie Bojack, Tammy Newman, Eleanor Hatcher, Sharon Hobart. Front row: Marlene Carlson, Betty Goebel, Sherrie Childers, Sandra Sloniker, Mary Garrison.



An aerial photograph of the town of Adna, Oregon. The town is situated in a valley, with a river visible in the lower-left corner. The surrounding area is densely forested, and the town itself consists of numerous small buildings and houses. A prominent road runs through the center of the town. The overall scene is a typical small-town landscape in a wooded area.

Adna



Randle
CLASSES



EV MACOMBER
President



BILLIE BOJACK
Vice President



MARILYNN JONES
Secretary Treasurer

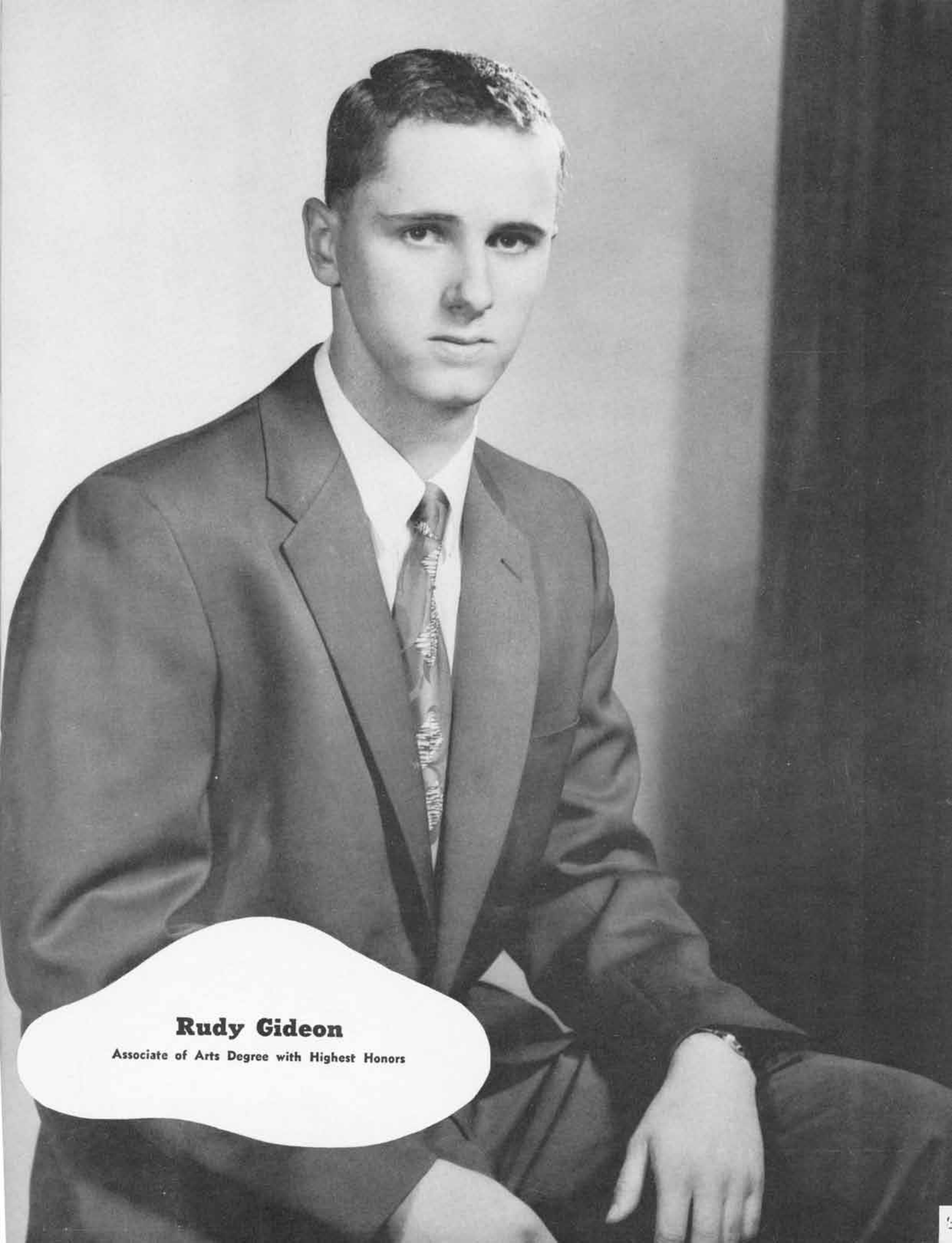
Sophomore Class Officers



MR. WALLENSTEIN
Adviser

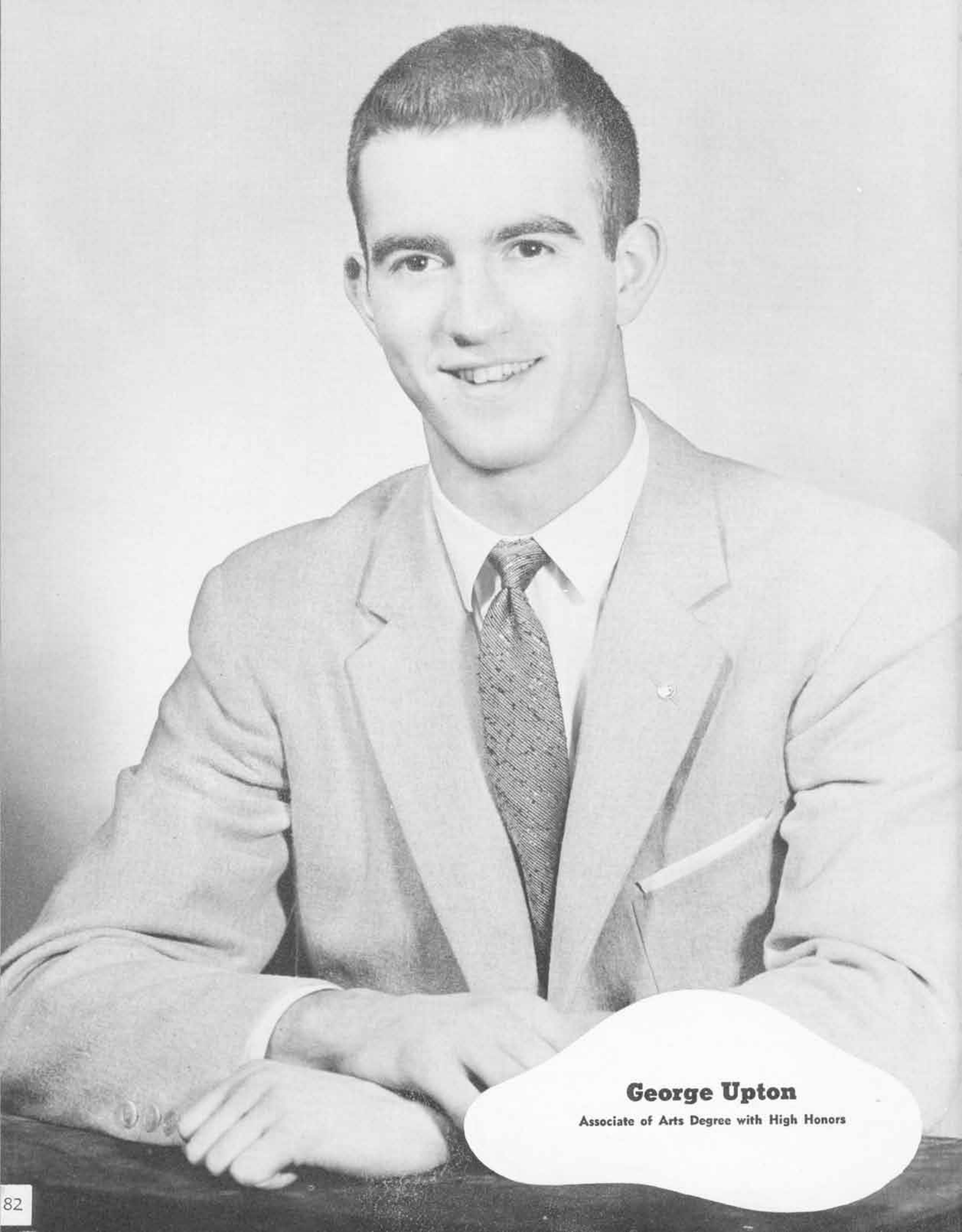


GLEN BELLERUD
Sophomore Representative



Rudy Gideon

Associate of Arts Degree with Highest Honors



George Upton

Associate of Arts Degree with High Honors



Carroll Crismon

Associate of Arts Degree with High Honors



ALICE ANNE ANDERSON
Olympia
Secretarial Science



KATHERINE DESPINA ATHANAS
Rochester
Foreign Languages



CHARLES RUSSELL AUSTIN
Olympia
Pre-Theology



JANE ALICE AUSTIN
Tenino
General Course



NANCY ALICE BARBER
Rochester
Pre-Education



WILLIAM LEE BELCHER
Mossyrock
Pre-Education



GLEN MELVIN BELLERUD
Olympia
General Course



DAVID JOHN BENDER
Tenino
Physics



DOUGLAS LEE BENNETT
Oakville
Pre-Agriculture



CAROL ELIZABETH BOGEN
Centralia
Pre-Education



BILLIE PHYLLIS BOJACK
Tacoma
Pre-Education



JAMES LINWOOD BREWER
Winlock
Pre-Engineering



DANIEL ELLIS BRUNER, JR.
Olympia
General

LOUIS FREDRICK CAVIEZEL
Morton
Pre-Engineering





CONNIE LEE CHAPPELL
Chehalis
Secretarial



SHERIE MAE CHILDERS
Chehalis
Arts and Sciences



RAY JAMES COBURN
Eatonville
Pre-Agriculture



DENNIS JAY KONZATTI
Centralia
Business Administration



CARROLL MAE CRISMON
Centralia
Pre-Education



LOREN JAMES DELANEY
Wishram
Pre-Engineering



MARY ELLEN DOYLE
Chehalis
Pre-Education



NORMAN JOHN EVELETH
Shelton
Forestry



GENE RAY FASANO
Centralia
Psychology



ANN MARIE FENN
Boistfort
Medical Technology



JOSEPH CHARLES FERGUSON
Winlock
Pre-Engineering



DONALD EUGENE FOWLER
Centralia
Mathematics



NANCY ELLEN FOWLER
Centralia
Pre-Education

RUDY ALAN GIDEON
Centralia
Mathematics





CHARLES MOFFETT GILL
Chehalis
Pre-Education



ELEANOR LAVINA HATCHER
Olympia
Pre-Education



SETH STEPHEN HAYES
Centralia
General



MARILYN KAY JONES
Tenino
Pre-Education



MARY LOU JONES
Boistfort
Physical Therapy



ROBERT JAMES JUNK
Olympia
Forestry



LAWRENCE NICHOLAS KAISER
Toledo
Pre-Agriculture



MILLARD ELON KIRKMAN
Tulelake, California
Psychology



ROBERT EDWARD KLETSCH
Toledo
Mathematics



ROBERT DALE LaCLAIR
Centralia
Business Administration



JERRY MICHAEL LEE
Olympia
Pre-Education



PAUL JAMES LIEN
Chehalis
Chemical Engineering



DOROTHY MAY McEACHRON
Pe Ell
Business Administration

JoANN McNULTY
Auburn
Secretarial





LOUIS EVERETT MACOMBER
Oakville
Pre-Veterinarian



DELBERT EUGENE MARKER
Centralia
Pre-Engineering



CARL MEREDITH MAW
Toledo
Pre-Education



BENNIE GENE MUSIC
Auxier, Ky.
Business Administration



LEWIS RAY NOEL
Chehalis
Pre-Medicine



REUBEN OSTER
Centralia
Pre-Engineering



CAROLE RAE PEARSON
Centralia
Pre-Education



ELMER GEORGE RASMUSSEN
Chehalis
Communications



JANICE ARLENE REINKE
Olympia
Pre-Education



DONALD NEIL REINSETH
Winlock
Pre-Engineering



DON THOMAS RICCARDO
Centralia
Business Administration



ROGER LEE RUTHERFORD
Kelso
Pre-Agriculture



MATTHEW JACOB SKOFF
Adna
Business Administration

RAY DEAN SMITH
Ashford
Pre-Education





JOHN RAYMOND SPEARS
Chehalis
Art



ERNEST CLYDE SWARTOUT
Ephrata
Pre-Engineering



BILLY CARLISLE TAPPAN
Morton
Pre-Engineering



ROBERT ROY THAYER
Toledo
Forestry



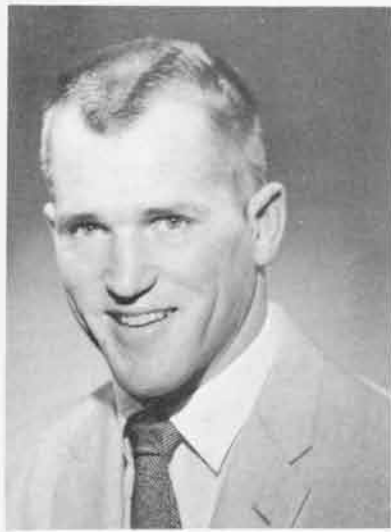
DUANE HERMAN THOMPSEN
Auburn
Pre-Chemistry



GEORGE MONROE UPTON, JR.
Centralia
Pre-Engineering



CLIFFORD ENGEL WAHL
Centralia
Radio-Speech



THOMAS HAROLD WALKER
Olympia
Pre-Education



ROBERT LEROY WEIKS
Rainier
Pre-Pharmacy



HAROLD H. C. WHEELER
Hopkinton, N. H.
Pre-Law



MARK WHEELER
Hopkinton, N. H.
Pre-Medicine



JANICE MARIE WIDELL
Centralia
Pre-Education



GEORGE OLIVER WISE
Olympia
Business Administration

GARNET ELAINE WOOD
Sequim
Pre-Education



Camera Shy Sophomores

HAROLD HENRY ARMSTRONG
Chehalis
Pre-Engineering

DAVID ROBERT BECK
Centralia
General Course

ROBERT LYNN BERRY
Chehalis
Pre-Education

RICHARD WAYNE BLAKELY
Winlock
Pre-Education

MICHAEL ERNEST CHRISTIAN
Olympia
Pre-Education

ROBERT DELAWARE COOPER
Olympia
Pre-Education

ROGER JACK CORBIN
Chehalis
Forestry

GEORGE CLARK DAWLEY
Chehalis
Pre-Education

CHARLES FREDERICK DOWNIE
Chehalis
Forestry

GENE ALLEN FAGERNES
Centralia
Forestry

RONALD LEROY FOLWELL
Chehalis
Pre-Education

JAMES MILTON GIBSON
Chehalis
Pre-Engineering

MELVIN LEON HEFFLEY
Centralia
Pre-Engineering

BOYD HARDNER HILL
Shelton
Pre-Engineering

RICHARD GERALD HOFFMAN
Centralia
Pre-Medicine

DALE LAWSON IRVING
Centralia
Pre-Engineering

FRANK WESLEY JAVORSKY
Onalaska
Pre-Engineering

WILLIAM WARWICK JOLLY
Centralia
General Course

STEVEN FRANKLIN JONES
Boistfort
Pre-Education

STEPHEN ROY LEE
Centralia
Pre-Education

WILMA JEAN LUFT
Centralia
Secretarial Science

MAX LAVERN PERRY
Onalaska
Pre-Engineering

ARI LEE ROBERTS
Centralia
Business Administration

KENNETH HANS RUD
Centralia
General Course

RICHARD GEORGE SCHERER
Centralia
Pre-Engineering

MILES LEON SKINNER
Chehalis
Pre-Engineering

TEDFORD LEE SMETHERS
Centralia
Pre-Education

RICHARD MILTON THOMAS
Tenino
Pre-Education

CHARLES EDWARD WIEGARD
Eatonville
Business Administration

FRANCES AUGUSTA WILMOVSKY
Centralia
Business Administration

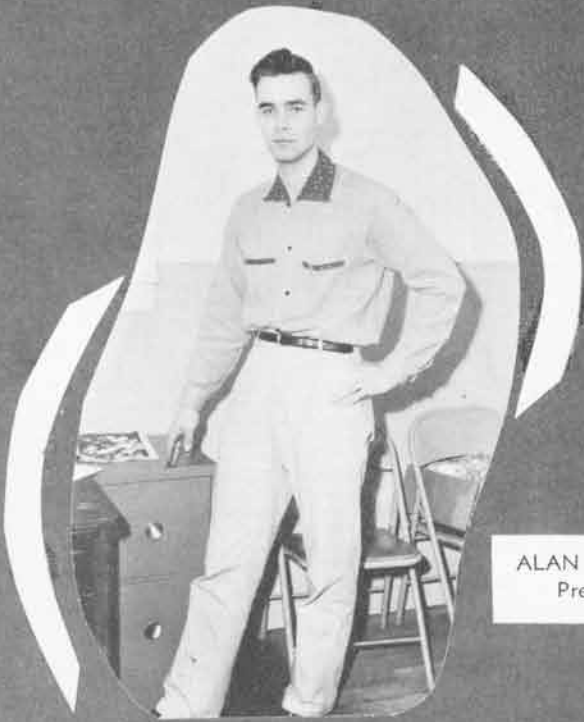
This Year the Sophomores Sponsored Hard Times Week



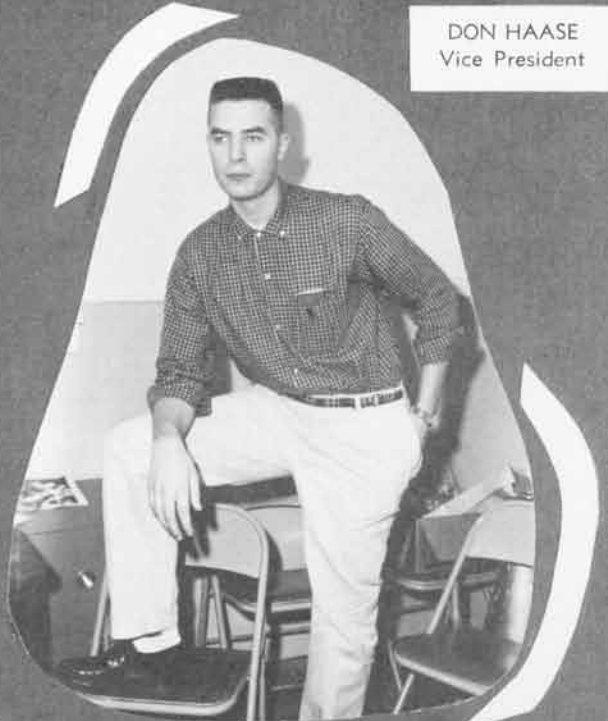
The week ending January 31 was proclaimed Hard Times Week. All male students were required to grow beards for three weeks; all violators were punished. A shaving license could be purchased; however, the validity of such a license was almost nil. An idea of the Hard Times' procedure can be gained from this paragraph from the Jay Seer. "To you fellows that are not sprouting beards a word of caution. Even though you get fired from your job, disowned by your girl, and become in general a social outcast, I advise strongly that you do your best to sprout at least a stubble. Think of the money you will save on razor blades. Many weird tales of past offenders of the Hard Times' celebrations are circulating. You may be next. Stockades are yawning and tar is bubbling and feathers flying for you beardless fellows."



Freshman Class Officers



ALAN WALTAR
President



DON HAASE
Vice President



GEORGIA McALLISTER
Secretary-Treasurer



MARY LOU DUNCAN
Freshman Representative



MR. HARRIS
Adviser



B. ADAMS
Chehalis



G. ALCORN
Winlock



R. ALLEN
Winlock



C. ANNIS
Chehalis



W. ARNETT
Chehalis



F. ARY
Chehalis



S. AYERS
Matlock



L. BACHMEIER
Winlock



B. BAFUS
Olympia



J. BAKER
Winlock



S. BALE
PeEll



J. BALSLEY
Adna



J. BANGSBERG
Centralia



J. BARNER
Centralia



H. BATIE
Centralia



D. BEATTY
Olympia



W. BELCHER
Mossyrock



H. BELL
Centralia



P. BELLERUD
Olympia



J. BELONGIA
Onalaska



C. BENNETT
Centralia



R. BERRY
Chehalis



T. BIEKER
Centralia



B. BISHOP
Centralia



W. BLANKENSHIP
Billings, Mont.



A. BOWERS
Winlock



D. BOWIE
Olympia



G. BOYD
Centralia



D. BREWICK
Centralia



A. BRIEM
Chehalis



J. BRILL
Centralia



B. BROWN
Olympia



N. BROWN
Rochester



L. BRYAN
PeEll



J. BRYANT
Olympia



G. BRYSON
Olympia



L. BUTKUS
Centralia



M. CARLSON
Oakville



M. CARLSON
Shelton



P. CARR
Shelton



A. CHENEY
Morton



D. CHRISTENSEN
Castle Rock



E. CHRISTIAN
Eatonville



F. CLARK
Onalaska



M. COLE
Olympia



E. COULTER
Yelm



W. CUMMINS
Olympia



C. DAMRON
Mossyrock



O. DARLING
Rochester



D. DAVID
Centralia



R. DAVIS
Waldport, Ore.



P. DeGARMO
Olympia



W. DEMING
Centralia



L. DESKINS
Chehalis



P. DEXTER
Centralia



J. DOHM
Olympia



D. DORN
Centralia



L. DOUBEK
Valley



R. DOWNIE
Chehalis



S. DRAKE
Olympia



K. DROPS
Bucoda



M. DUNCAN
Centralia



C. EDE
Onalaska



J. ENGLAND
Chehalis



G. EWERS
Centralia



E. FEAR
Chehalis



E. FRANK
Morton



M. GARRISON
Centralia



R. GATES
PeEll



A. GEISZLER
Adna



D. GESLER
Centralia



J. GIBSON
Chehalis



E. GIBSON
Chehalis



C. GILL
Chehalis



B. GOEBEL
Centralia



J. GRATTON
Centralia



J. GUDYKA
PeEll



K. GUFFEY
Olympia



J. GUTHRIE
Eatonville



D. HASSE
Adna



M. HAMBRICK
Centralia



R. HARRIS
Olympia



D. HAUGE
Tacoma



S. HAYES
Centralia



B. HEDDEN
Tenino



L. HEDGES
Olympia



S. HEDGREN
Centralia



F. HEITZMAN
Adna



C. HENDERSON
Chehalis



D. HENSE
Centralia



N. HENTHORN
Centralia



R. HIGHLAND
Olympia



D. HINES
Chehalis



S. HOBART
South Bend



J. HOFMANN
Centralia



R. HOWELL
Castle Rock



J. HUDZIAK
Lebam



K. HUGILL
Centralia



R. HULL
Chehalis



E. ICE
Olympia



D. JOHNSON
Rochester



H. JOHNSON
Centralia



M. JOHNSON
Centralia



N. JOHNSON
Centralia



M. KALLA
Tenino



W. KELLER
Olympia



M. KENT
Toledo



R. KERN
Tenino



B. KINTZLEY
Centralia



R. KLETSCH
Toledo



D. KULMAN
Centralia



K. KUPER
Centralia



H. LARSON
Olympia



J. LEGAT
Winlock



J. LINDGRAN
Olympia



R. LOCKE
Onalaska



M. LOOP
Centralia



G. LOWE
Centralia



J. LYNCH
Olympia



G. McALLISTER
Centralia



S. McALLISTER
Centralia



A. McCOY
Olympia



C. McCOY
Onalaska



M. MACKEY
Toledo



J. MAHLER
Tenino



H. MANDT
Randle



S. MARKS
Rochester



G. MARTIN
Centralia



J. MARTIN
Tenino



M. MATHENY
Centralia



J. P. MATLICK
Toledo



W. MELTON
Toledo



S. MEREDITH
Olympia



D. METCALF
Olympia



V. MIDDAUGH
Centralia



J. MITCHELL
Centralia



B. MONROE
Tenino



S. MORAN
Centralia



D. MORROW
Olympia



L. MUELLER
Boistfort



W. MULLENIX
Olympia



B. MUSIC
Olympia



M. MUSIC
Olympia



R. NEELEY
Chehalis



R. NEWMAN
Rochester



T. NEWMAN
Rochester



M. NIELSON
Toledo



S. NOEL
Centralia



N. NORMAN
Onalaska



D. OLSON
Adna



O. OLSON
Centralia



V. OLSON
Centralia



J. ORNI
Winlock



J. OWENS
St. John



D. PARISH
Toledo



B. PATTERSON
Centralia



D. PATTERSON
Centralia



R. PAULEY
Randle



R. PAULSON
Shelton



J. PETERSON
Napavine



M. PETERSON
Walla Walla



N. PETERSON
South Bend



S. PETESRON
Olympia



L. PINKERTON
Boistfort



R. POAGE
Winlock



S. PRANG
Olympia



J. PREHM
Winlock



L. PRESTON
Centralia



M. RAAB
Centralia



M. RAY
Toledo



F. REED
Spanaway



P. REEDER
Tillamook, Ore.



J. RIPKA
Tillamook, Ore.



K. RISHER
Port Orchard



J. ROGERS
Centralia



P. ROSENGREN
Centralia



C. ROUSSEAU
Centralia



D. SAARI
Centralia



G. SALMI
Winlock



M. SAREAULT
Centralia



T. SAREALT
Chehalis



B. SAYLER
Adna



C. SHAMEHORN
Olympia



J. SCHWARZ
Adna



T. SCHULTZ
Olympia



H. SHEPARDSON
Toledo



J. SHULTZ
Tenino



B. SINGH
India



D. SIZEMORE
Centralia



D. SMITH
Chehalis



R. SMITH
Centralia



F. SOLMER
Chehalis



D. STALLGUP
Centralia



B. STEWART
Chehalis



R. STEWART
Chehalis



M. STOVER
Centralia



E. STOVER
Centralia



W. STRONG
Centralia



J. TAUSCHER
Chehalis



D. TEITZEL
Chehalis



L. TESTERMAN
Valley



E. THIETJE
Olympia



A. THOMSEN
Centralia



C. TOWNER
Centralia



D. URICH
Onalaska



T. VANDIVER
Yelm



S. VOGT
Germany



R. WALLBRIDGE
Centralia



A. WALTER
Adna



E. WALTERS
Wamego, Kan.



R. WALTERS
Wamego, Kan.



D. WARD
Centralia



O. WATILO
Centralia



A. WEBSTER
Centralia



J. WEST
PeEl



R. WILLIAMS
Olympia



G. WILMOVSKY
Centralia



K. WILSON
Adna



R. WINK
Adna



L. WOLF
Centralia



V. WOLFF
Centralia



G. WOODWARD
Centralia



J. YOUNG
Olympia



S. ZANDELL
Olympia

Camera Shy Freshmen

R. ALLRED
Centralia

F. AMBSDORF
Adna

A. ANDERSON
Olympia

J. BELL
Puyallup

C. BISHOP
Olympia

G. BROWN
Centralia

H. CAREY
Olympia

R. CARLSON
Olympia

G. CRONK
St. John

G. DAWLEY
Chehalis

T. ERDMAN
Centralia

R. ERICKSON
Tacoma

G. FISHER
Centralia

L. FLEM
Chehalis

M. FOLSOM
Centralia

J. GARD
Centralia

G. GIVENS
Adna

G. GLAZE
Onalaska

F. GREER
Tenino

D. HANGER
Onalaska

D. HARRINGTON
Olympia

D. HARRIS
Olympia

G. HASKIN
Chehalis

G. HERRIFORD
Centralia

J. HERRIFORD
Centralia

L. HESSLER
Randle

G. HEWLETT
Chehalis

J. HULL
Morton

M. JAMERSON
Eatonville

C. JAMES
Chehalis

C. JAVORSKY
Onalaska

B. JOHNSON
Centralia

N. JOHNSON
Centralia

K. JONES
Olympia

J. KAISER
Olympia

J. KELLER
Boistfort

W. LEWIS
Centralia

N. LINSOTT
Centralia

A. LUNDGREN
Chehalis

D. MACKEY
Olympia

J. MADSEN
Centralia

F. MARTIN
Tenino

R. MILLER
Chehalis

L. MITCHELL
Oakville

G. OKUMA
Seattle

D. OLSON
Centralia

A. ORKNEY
Raymond

G. PETRIE
Chehalis

D. PIESCH
Olympia

W. RAMSAUR
Centralia

C. ROSS
Centralia

R. RYDMAN
Olympia

M. SCHINDLER
Morton

S. SLONIKER
Centralia

C. SPUTE
Olympia

R. SUTER
Winlock

T. THOMAS
Adna

C. VAN AUKEN
Centralia

R. WHITTLE
Olympia



CAPPING EXERCISES

Annette Gilkerson, Celia Hopkins, Ella Lewis, Marjorie McAuley, Nellie Prill, Ann Lee Rarey, Mrs. Sippola, Winona Salmon, Lola Warren, Pauline Wegner, Mary Lou Wells, Ora Wheeler, Grace Wyatt.

Practical Nursing



A Graduate Speaks

The 1957-1958 school year has been an unusual one in several respects. Some history students predict that it will be recorded in the texts for at least two reasons. We graduates will remember it in a more personal way.

Locally, on the Centralia Junior College campus, this school year has been successful. The student enrollment, almost four hundred, was the largest to date. The students reflected in their choices of major fields—Education, engineering, and science—the current vocational booms. The students seemed to be going about their endeavors in all seriousness. There was an air of maturity about them—maturity inspired, no doubt, by events national and international.

Nationally, this year may be recorded as one which brought the beginning of a great depression, or at least a year of temporary recession. In any event, there was widespread unemployment and dollar hoarding in the country. Over five-million persons were unemployed. In Detroit alone one-quarter of a million people found themselves out of work. The government began corrective measures immediately—easing of credit and extended unemployment benefits.

Internationally, this year will surely be recorded in history as the year of the satellites. Russia suddenly became a first-class scientific nation by the impressive lofting of a gigantic rocket which at its apex sent a sphere into orbit around the earth. The psychological effect of the Russians' rocket brought on a general panic in our country and a rash of accusations directed toward high public officials. The American reaction took form in an urgent rush toward revising our educational system to stress science and mathematics. Our armed services, under extreme pressure, launched their own satellites, which although much smaller than those of the Russians, served to ease the panic in the West.

The opportunities of the college graduate have increased regardless of the economic picture. Higher education has gained national attention and support during the past year. The resultant movement to the college ranks of people whose education would ordinarily have been terminated at high school will assure this graduating class of strong competition. We are not going into a period of abundant employment; it will be a period in which the qualified person will be successful.

Our college, to the best of its ability, has given us the opportunity to learn. It has become a part of our lives. On future appraisal only will we realize fully the benefits that have been offered to us here. Whether or not we have taken advantage of these benefits, we will take with us many memories of Centralia Junior College.

MILLARD KIRKMAN

